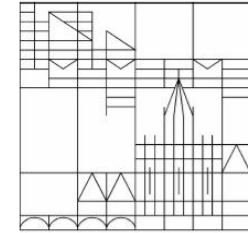


Survival and Growth of New Organizational Forms

The German Local Exchange Trading Systems

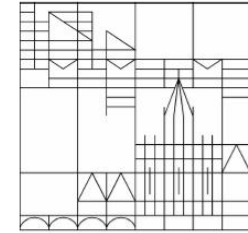
Simone Wagner
University of Konstanz, Germany
Simone.Wagner@uni-konstanz.de

Contents



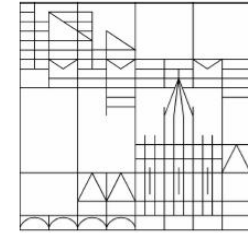
- Local Exchange Trading Systems
- Objectives of the Study
- Theoretical Background and Hypothesis
 - entrepreneurial characteristics
 - attributes of the new organisation itself
 - entrepreneurial environment
- Methodology
- Results

Local Exchange Trading Systems



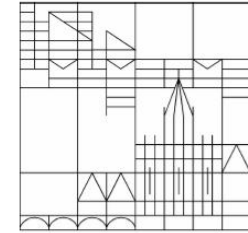
- Definition: special form of social movement
 - networks of mutual support and community-building especially for poor and unemployed
 - building alternative, local economy with own local currency
 - facilitating indirect exchange of goods and services
 - participation of socially excluded people rich in time but short in money
- Characteristics
 - no “economic institutions of capitalism”: neither monetary incentives nor enforceable contractual arrangements
 - local currency: time vs. money based
 - no interests
 - no or extremely generous credit ceiling
 - no banking secrecy

Objectives of the Study



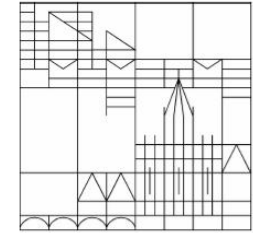
- Objective
 - survival chances of Local Exchange Systems
 - organizational growth of Local Exchange Systems
- Research Questions
 - individual characteristics of founder
 - attributes, structural characteristics of Local Exchange System itself
 - environmental attributes

Theoretical Background



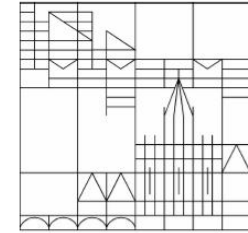
- Indicators: evaluation of success of the Local Exchange Systems
 - survival
 - Local Exchange Systems are Non-Profit Organisations
 - no transfer with capital gain possible
 - closure of Local Exchange System:
“final manifestation of unsuccessful organization performance” (Carroll 1987: 44)
 - growth
 - sales trend not suited as indicator
(no profits; no monetary dimensions)
 - employee trend: modified to participant trend

Entrepreneurial Characteristics



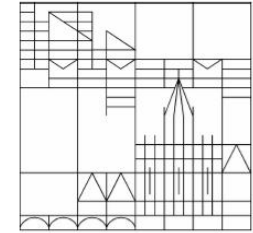
- Human Capital Theory
 - greater human capital increases productivity resulting in higher profits
 - traditionally focus on earnings of employees
- Transfer to entrepreneurial activity
 - greater human capital of founder increases his productivity resulting in better prospects of the foundation
 - especially modified form of specific human capital (industry-specific experience, prior self employment experience, leadership experience)
 - selectivity effects: well-endowed founders: better selection of promising projects

Entrepreneurial Characteristics



- Human capital and Local Exchange Systems
 - higher human capital of entrepreneur better prospects of Local Exchange System
 - better organization; public relations
 - selectivity effects: “a priori”
(resources, knowledge of legal basis, planning)
 - forms of human capital
 - general human capital: no indicators available
 - greater importance of specific human capital
 - modified form of specific human capital
(prior experiences with Local Exchange Systems, Non-Profit Organizations)
- *Hypothesis:*
Human Capital of the founder will positively influence the prospects of the Local Exchange Systems.

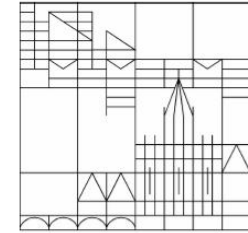
Attributes of the new organization



- Organizational design
 - early founding: important organizational characteristics influencing prospects
- Organizational design with Local Exchange Systems
 - currency, rules, constitution
 - important for opportunistic behaviour and free riding
- *Hypothesis*

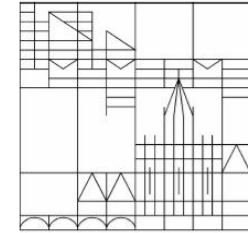
The success of the Local Exchange Systems is related to these organizational attributes.

Attributes of new organization



- *Liability of newness* (Stinchcombe 1965)
 - many organizations die young: higher risk of failure
 - missing established relations, rules, roles, routines
- *Liability of adolescence*
 - inverted u-shaped risk pattern: initial rising risk
 - initial stock of resources
 - expectations of rational founder
 - especially Non-Profit Organizations
 - lower stress of competition
 - after adolescence:
 - judgement \Rightarrow failure when expectations were disappointed
- Followers
 - better prospects: “piggybacking upon existing experience” (Bates 1990: 12)
 - established relations, internal routines

Attributes of new organizations

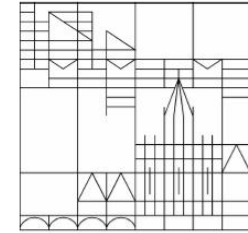


- Local Exchange Systems and age dependent survival chances
 - disassociate themselves from regular economy (no stress of market competition)
 - strong ideological approach: partially utopian objectives
 - danger of disappointing these euphoric expectations after period of protection (leap of faith)
- *Hypothesis*

The risk pattern of Local Exchange Systems will follow a liability of adolescence.
- Local Exchange Systems as followers
 - stable affiliation to existing scheme: resources, knowledge, members
- *Hypothesis*

Better survival chances are predicted for merger or spin-off systems.

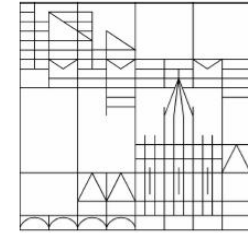
Attributes of new organizations



- *Liability of smallness*
 - large new organizations \Rightarrow better survival chances
 - better cope with random shocks from the environment, better raise capital, better taxation conditions, better position in competing for qualified labour
- Local Exchange Systems and size dependent survival chances
 - distinct size at starting point for winning participants and diverged supply
 - too large systems: anonymous, no social control possible (problems in securing transactions)
- Hypothesis

For Exchange Systems an u-shaped pattern between size and mortality is expected, i.e. a survival of the medium size.

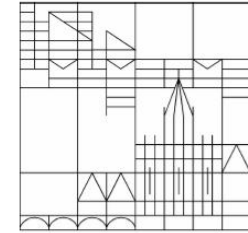
Entrepreneurial Environment



- Organizational imprinting: density dependence of survival chances:
 - organizations of same population linked to each other through processes of legitimation and competition
- Density dependence and Local Exchange Systems
 - limited carrying capacity of niche at starting point
- Hypothesis

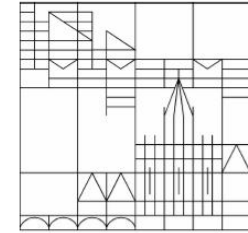
Mortality rate of Local Exchange Systems will decrease with increasing legitimation and increase as far as competition dominates the process.
- Other environmental forces at founding:
 - *task, institutional environmental variables and effects of the political environment*
- Relevant variables for Local Exchange Systems at starting point
 - high regional employment rate: +
 - regional green orientation (percent voting greens in district): +

Methodology



- Data
 - standardized telephone interview of all capable Local Exchange Systems (N = 316)
 - survivor bias: dominance of successful schemes in sample
 - statistical bureau
- Methods
 - survival chances
 1. nonparametric, bivariate life-table estimate
 - two censor variables to avoid survivor bias:
failure and
failure or less than 30% active members
 2. multivariate analyses with stronger censor variable
 - cox regression model
 - logistic regression model (failure within 5 years or less than 30% active members)
 - organizational growth
 - OLS regression model (participant trend, logarithm)

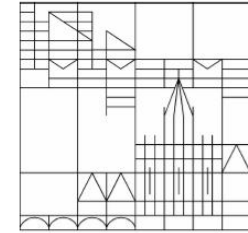
Methodology



Used variables and expected effects on survival chances

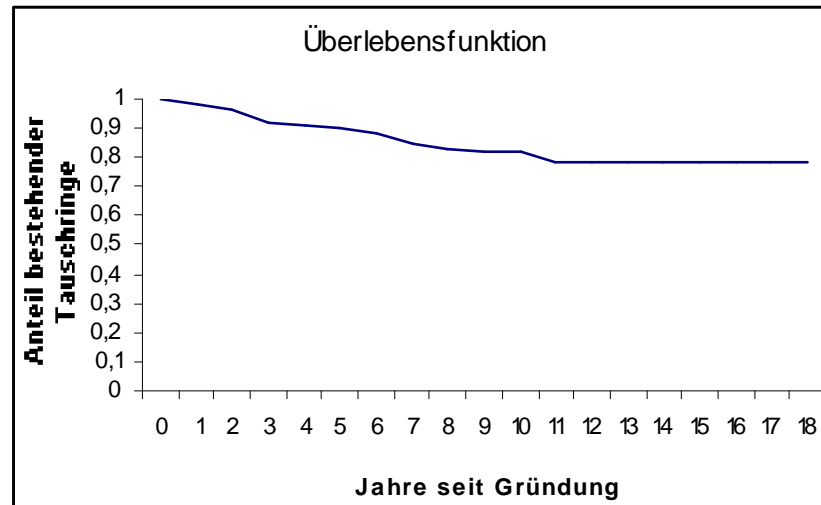
	Variable	Direction
entrepreneurial characteristics	specific human capital <ul style="list-style-type: none"> • personal experience • indirect experience • medial experience 	+
attributes of organization	age follower size organizational degree currency (time-based) rules (index)	+ + +/- + + +
environmental characteristics	population density high regional unemployment rate high percentage voting the greens in region	+/- + +

Results



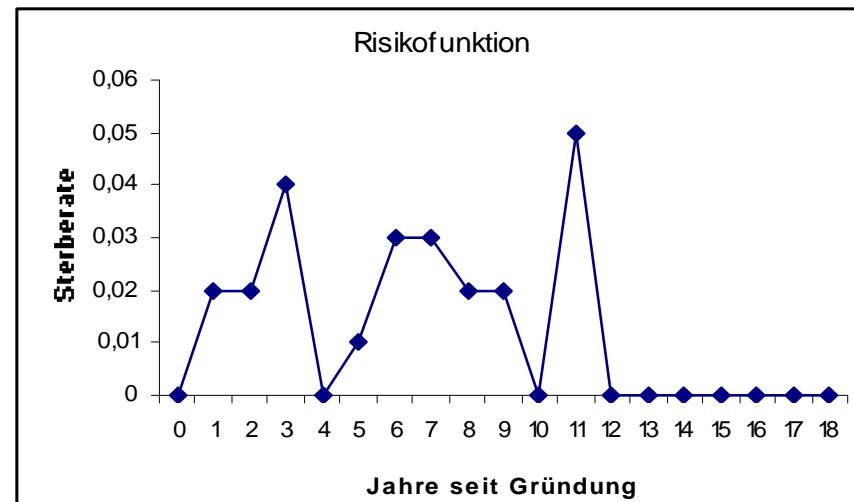
- Survival of Local Exchange Systems

Survival Function



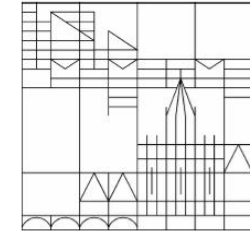
Source: Tauschringkoordinatorenbefragung 2005; N = 309

Hazard Function



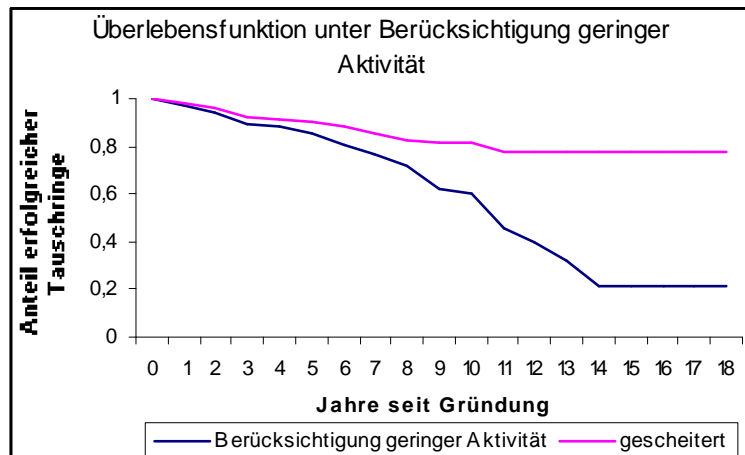
Source: Tauschringkoordinatorenbefragung 2005; N = 309

Results



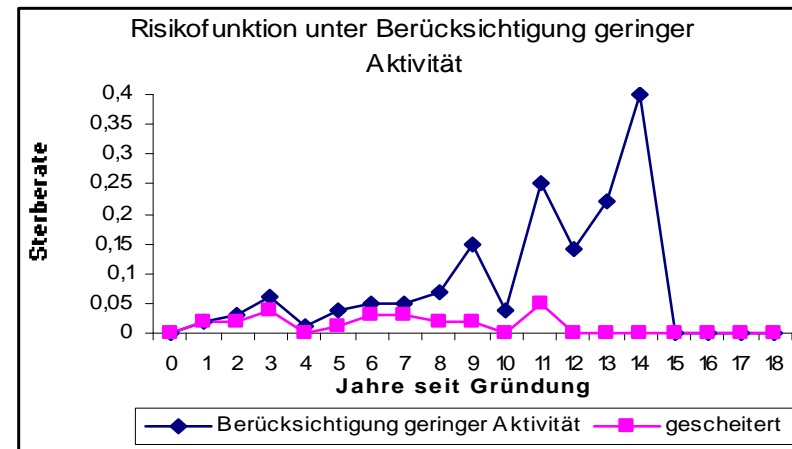
- Survival of Local Exchange Systems controlling for activity

survivor functions regarding activity



Source: Tauschringkoordinatorenbefragung 2005;
N = 298 resp. 309

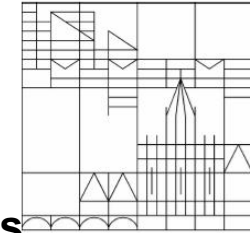
hazard functions regarding activity



Source: Tauschringkoordinatorenbefragung 2005;
N = 298 resp. 309

- Censor variable “failure“: over estimation of survival chances
 - many schemes due to no/extremely low activity level no longer viable but still remain (formal vs. operative survival)

Results



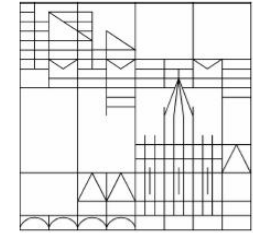
Logistic regression: failure 5 years or less than 30% active members

Variable	(1)	(2)	(3)
HKpers	-0,263 (0,281)	0,054 (0,361)	0,091 (0,375)
HKind	0,012 (0,348)	0,033 (0,352)	0,026 (0,372)
HKmed	0,059 (0,314)	0,016 (0,320)	-0,037 (0,327)
neu		1,298 (0,812)+	1,359 (0,823)*
lgröße		2,496 (1,492)*	2,679 (1,547)*
lgröße²		-0,370 (0,228)+	-0,393 (0,235)*
recht		-0,061 (0,402)	0,012 (0,410)
geld		-0,494 (0,356)	0,519 (0,369)
regel		-0,042 (0,075)	-0,045 (0,076)
dichte			-0,005 (0,009)
dichte²			0,000 (0,000)
alos			0,033 (0,034)
ideol			-0,040 (0,039)
Konstante	-1,107 (0,348)***	-6,352 (2,541)**	-7,058 (2,758)**
N	266	266	266
Pseudo R²	0,003	0,036	0,046
Chi²; df	0,714; 3	9,650; 9	12,549; 13

Source: Tauschringkoordinatorenbefragung 2005; statistical bureau: Statistische Jahrbücher

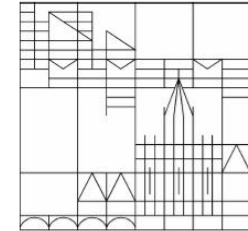
(***) 1% significance, (**) 5% significance, (*) 10% significance, (+) tend. significance, standard error in parenthesis

Results



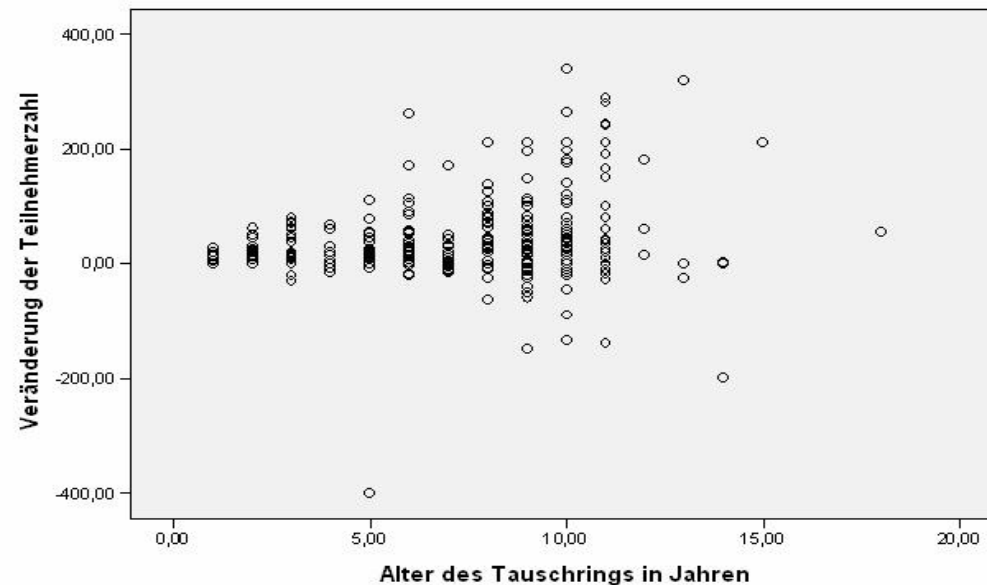
- Interpretation: effects on survival of Local Exchange Systems
 - almost no empirical evidence for ecological assumptions considering the survival chances of Local Exchange Systems
 - however strong survivor bias and little explanatory power of logistic regression models
- Successful schemes
 - follower systems
 - smaller or larger systems: liability of the medium size

Results

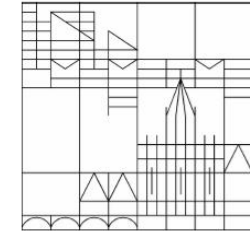


- Growth of Local Exchange Systems
 - only surviving systems in analysis
 - information about number of participants at point of founding and survey
 - dependent variable:
difference of participants at point of survey and founding (logarithms)
 - methods: OLS Regression models

participant trend regarding age of Local Exchange System



Results



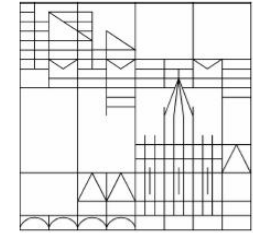
OLS Regression: Participant trend (logarithm): standardised beta coefficients

Variable	(1)	(2)	(3)
HKpers	-0,101 (-1,559)	-0,079 (-1,089)	-0,082 (-1,118)
HKind	0,024 (0,364)	0,039 (0,590)	0,038 (0,572)
HKmed	-0,093 (-1,423)	-0,085 (-1,307)	-0,085 (-1,300)
neu		-0,046 (-0,634)	-0,049 (-0,673)
TRalter		0,187 (2,708)**	0,191 (2,667)**
regel		0,009 (0,143)	0,009 (0,134)
recht		-0,096 (-1,467)	-0,025 (-0,367)
geld		-0,022 (-0,336)	-0,097 (-1,470)
alos			-0,023 (-0,354)
ideol			-0,014 (-0,212)
N	243	243	243
R²	0,018	0,056	0,057

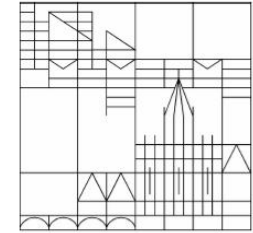
Source: Tauschringkoordinatorenbefragung 2005; statistical bureau: Statistische Jahrbücher

(***) 1% significance, (**) 5% significance, (*) 10% significance, (+) tend. significance, standard error in parenthesis

Results



- Interpretation: effects on growth of Local Exchange Systems
 - again: almost no empirical evidence for ecological assumptions
 - population density due to colinearity effects not included
- Effects on growth
 - age of the system: liability of newness – social acceptance important for systems' growth



Thank you for your attention!