

WELCOME TO THE DEPARTMENT OF SOCIOLOGY!



Nice to meet you!

We are happy to **WELCOME you** at our department!

25 international exchange students from 8 countries



Agenda

- Intro IfS – The Department and International Office
- Course participation
- FAQ
- Special offer from our LMU student representatives

IfS – Our Department

IfS – Our Department

- One of the most renowned sociology departments in Germany
- Currently training approx. 15% of all sociology graduates in DE
- Diverse thematic areas: 7 research and training units



IfS – Our Department

- More than 80 members of the department
- Comprehensive qualitative and quantitative method. training
- Highly ranked in terms of third-party funding



IfS – 7 Research areas

- Quantitative Methods
- Economy
- Education

- Quantitative Methods
- Family
- Employment
- Panel Data

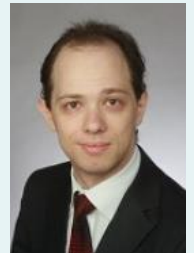
- Social Inequality
- Science, Technology and Environment
- Employment
- Education

- Culture and Science
- Politics
- Religion
- Organisation

- Gender Studies
- Family
- Sociological Theory
- Sociology of the Body
- Cultural Studies

- Qualitative Research Methods
- Sociology of Health and Illness

- Eastern European Studies
- Quantitative Methods

Prof. Katrin **Auspurg**Prof. Josef **Brüderl**Prof. Stephan **Lessenich**Prof. Armin **Nassehi**Prof. Paula-Irene **Villa**Prof. Hella **von Unger**Prof. Alexander **Libman**

International Collaboration at IfS

Erasmus agreements with 26 partner organisations....



International Collaboration at IfS

...in 15 countries in Europe...

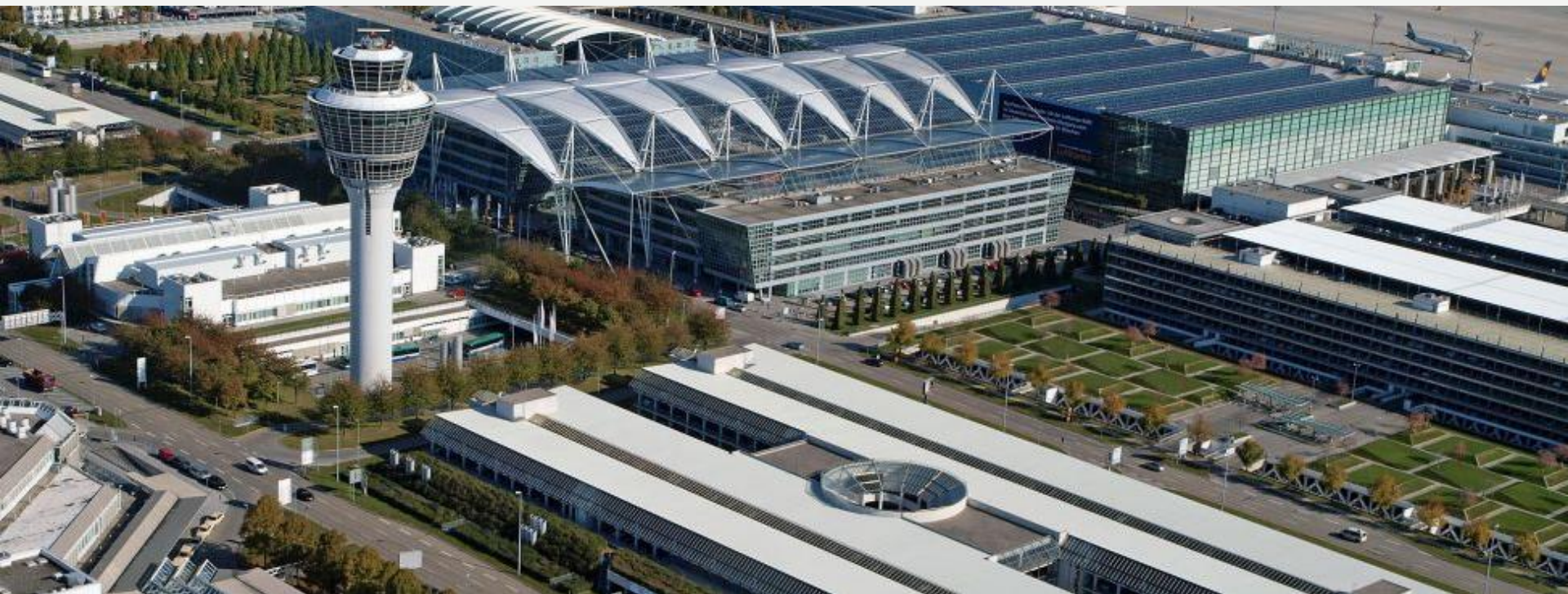


1 in South America...



International Collaboration at IfS

Around 50-60 outgoing and incoming exchange students per academic year



IfS - Services for exchange students

- English-taught courses of at least 30 ECTS each semester
- Bi-weekly consultation hours, ongoing email consultation
- Help with any question regarding your sociology courses



Course types

Course type “Lectures”

- Venue @Main Building LMU
- **100-200 students**
- **Weekly sessions** held by a Professor
- Only exceptionally discussions
- Literature **self-study** at home
- **Written exam** (Klausur) usually **last week of lecture period**



Add the lecture to your study schedule (LSF Stundenplan). Prerequisite for receiving the grade in LSF.

Course type “Seminars”

- Venue here @IfS
- Usually **15 to 30 students**
- **Presentation** with fellow students during semester
- **Active participation** in discussions
- **Literature** self-study, at times practical exercises, end of **term paper**
- **9 ECTS**



Course type “Tutorials”

- Venue here @IfS
- Usually **15 to 30 students**
- Offered individually or concomitantly to lectures
- **Active participation** in discussions
- Focus on **practical skills**
- Usually **presentation, term paper, literature** self-study
- **For exchange students always 6 ECTS**



FAQ

FAQ

How do I enrol for courses?"

Done



FAQ

How do I register for an exam?

Tell the lecturers of your courses that you are an Erasmus/exchange student and would like to take the exam. S/he will add you to the exam list.



FAQ

How will I get my Transcript of Records?

Create your timetable in LSF using your LMU user account (see Instructions for Transcripts/International Office). At the end of the semester (Sept/Oct), lecturers will insert your course grades in LSF. Check regularly and once all grades are there, generate and download your transcript.



FAQ

When will I get my Transcript?


In most cases by end of the semester (beginning of Oct for the summer term). Send me an email if you need it by a specific date and do not forget to announce the date to your lecturers!



FAQ

When will my courses start?


First day of lecture period: 14 October 19. Check duration of your particular courses in the online portal LSF.

 Bureaucracy and Power in Authoritarian Regimes - Single View



Functions:

Basic Information

Type of Course	exercise course	Long text
Number	15210	Frequency
Term	WiSe 1920	Weekly hours
Max. participants	20	
Language	English	



Dates/Times/Location Group: [-]

	Day	Time	Frequency	Duration	Room	Lecturer
 	Mon.	14:00 to 16:00 c.t.	woch	14.10.2019 to 03.02.2020	Konradstr. 6 - 109 Geschossplan	Libman

FAQ

May I miss my class?

Usually no more than twice. Wait for course-specific info when attending your classes



FAQ

What does s.t. and c.t. mean?

s.t. (sine tempore) = sharp

c.t. (cum tempore) = 15 min later → 9 Uhr c.t. = 9:15am



FAQ

Where will I find the room numbers, ECTS points etc. for my course?

Check on LSF, insert course title or ask your lecturer



FAQ

Where do I find the open consultation hours (“Sprechstunde”) of my lecturers?

Check online: IfS website → “Personen” → name of lecturer



Services and facilities

And at the International Office...

Pascale Lacoste

Admission for Erasmus+ students



+49 (0)89 2180 2783

erasmus-incoming@lmu.de

Claudia Gebhard

Admission for Erasmus+ students



+49 (0)89 / 2180-2799

erasmus-incoming@lmu.de

Tithmalis Fahrmeir-Min

Admission for LMUexchange students



+49 (0)89 / 2180-3213

lmexchange-incoming@lmu.de

Monique-Claudine Esnouf

Social and intercultural support for students; grants and scholarships; TutorIA; international advisory board; refugee matters



+49 (0)89 / 2180-2019

mesnouf@lmu.de

Your contact person at IfS

Tanja Kreetz

Departmental Exchange/Erasmus Coordinator

Konradstr. 6 (room 001)

e: tanja.kreetz@lmu.de

p: 089-2180-1302

Open **consultation hours:**

Tue 11am-12pm, Thur 2pm-3pm



Library for Sociology

- Leopoldstr. 13 (U-Bahn Giselastraße)
- Opening hours

Mo-Fr 8am - 10pm

Sat 9am-6pm



IT services and facilities

- Consultation hours: Mo-Thu 10am-12pm
- Computer lab: **4th floor IfS (room 409)**
- Login with credentials of Campus Mail Account
- edv@soziologie.uni-muenchen.de



“Fachschaft” Sociology

Student association/council: <http://www.fssoziologie.de/>



Way from IfS to LMU main building

Konradstr. 6 → Geschwister-Scholl-Platz 1

Walk in about 12-13 min (approx. 1km)

Take the U-Bahn (1 stop, approx. 8 min altogether)



Academic Calendar

Two semesters

- **Winter semester:** 1 October – 31 March
- **Summer semester:** 1 April – 30 September

Lecture period (“Vorlesungszeit”) in winter semester 2019/20:

- 1st day of lectures: 15 October 2019
- Last day of lectures: 7 February 2020

Classes: held during lecture period (“Vorlesungszeit”)

Term papers: usually written during semester breaks

No set exam period (normally end of lecture period)

**Nice meeting you -
Enjoy your stay here in Munich!**